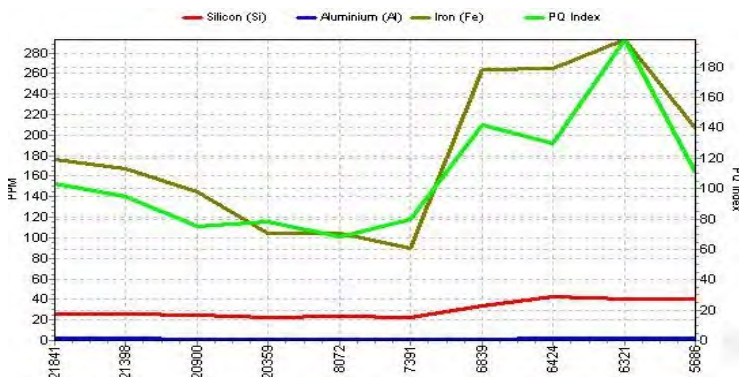
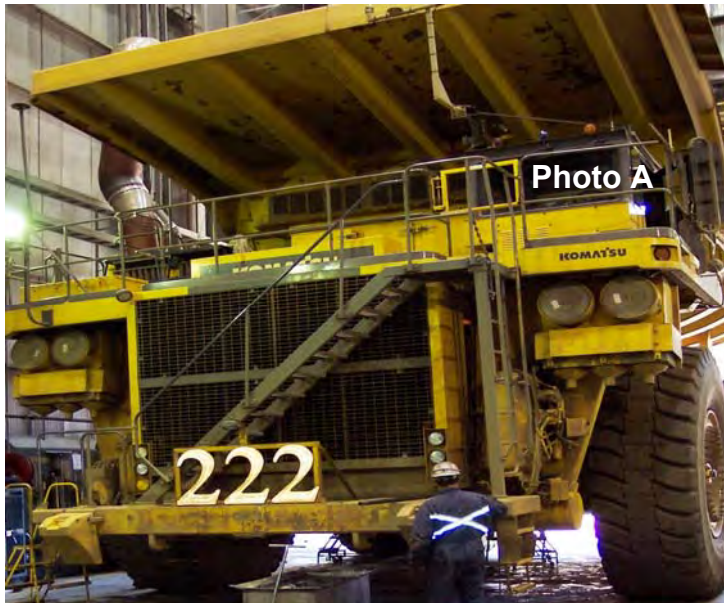


Case Study: 830E WHEEL MOTORS



Iron Ore Company of Canada

Labrador City, NL, Canada

June 2009

APPLICATION: Wheel Motor Lube Oil

PROBLEM: No Filtration in the wheel sumps. Oil Analysis shows an increase in ferrous metal.

SOLUTION: Installation of OEI's Magnetic Filter filler cap design (25RFC787) in place of the manufacturers' filler cap.

RESULTS: Photo B shows the results of the magnetic filter after only 452 hrs. Having the magnetic filter designed into the filler cap allows for continuous inspection which also works as a predictive maintenance tool.

If an increase in contamination is noticed proper actions can be taken. Without this tool an increase in ferrous contaminants would not be noticed until oil analysis is taken.

The graph shows the results of installing the magnetic filter at 6839 hrs of operation. The Fe ppm dropped from 260 to 90 and is being filtered to submicron levels. Continuous filtration will lower the contamination levels and keep them low thereby extending component and lube oil life.

For further information contact our office or visit our website

www.OneEyeIndustries.com